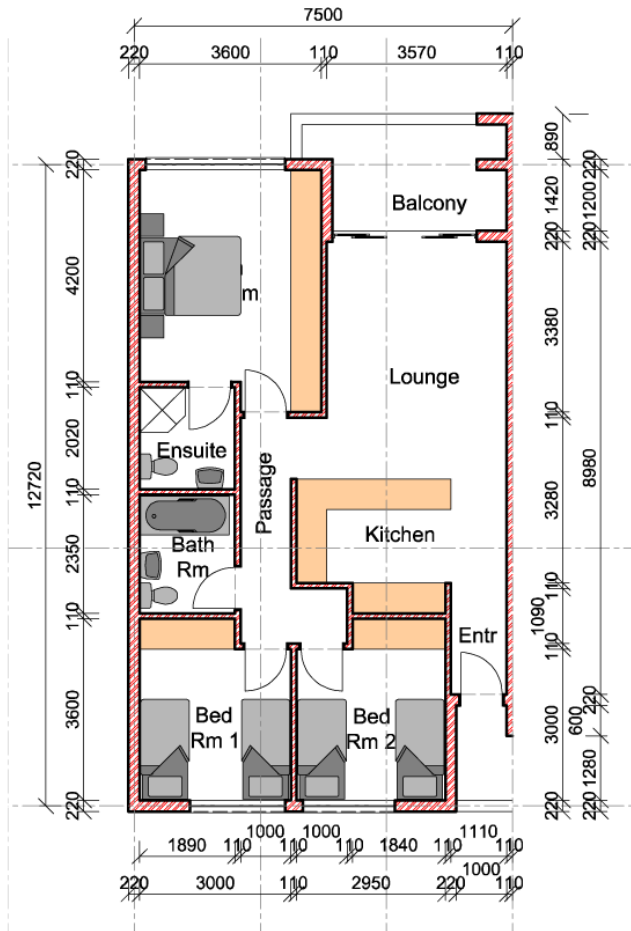


ANNEXURE C

TRIPLE POINT: UNIT PLAN WITH BUILDING FLOOR PLAN



Three bedroom Unit: option 1

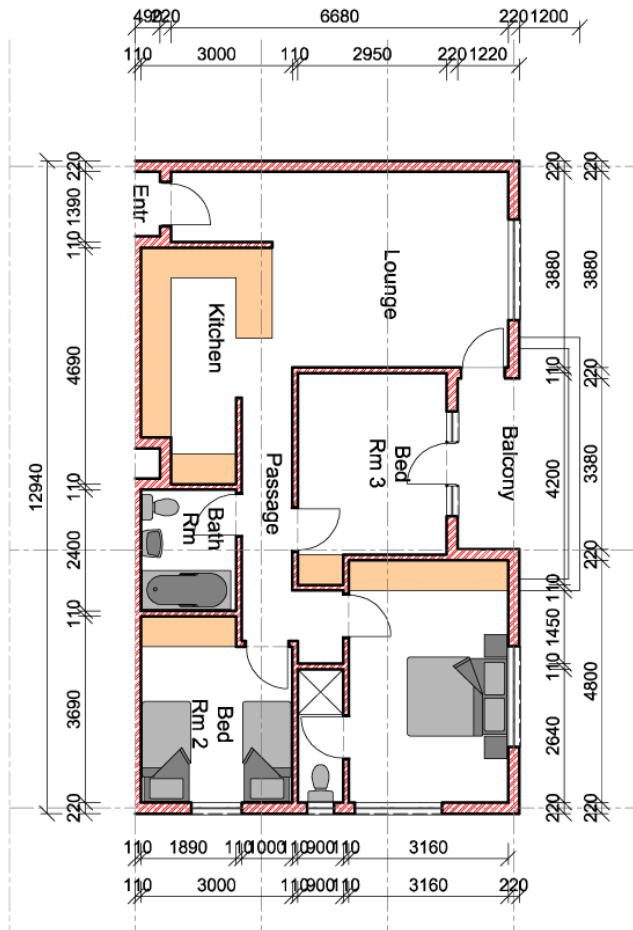
Lettable Area:	87.5 m <sup>2</sup>
Balcony:	9.6 m <sup>2</sup>
Passage:	0 m <sup>2</sup>
TOTAL AREA:	97.2 m <sup>2</sup>



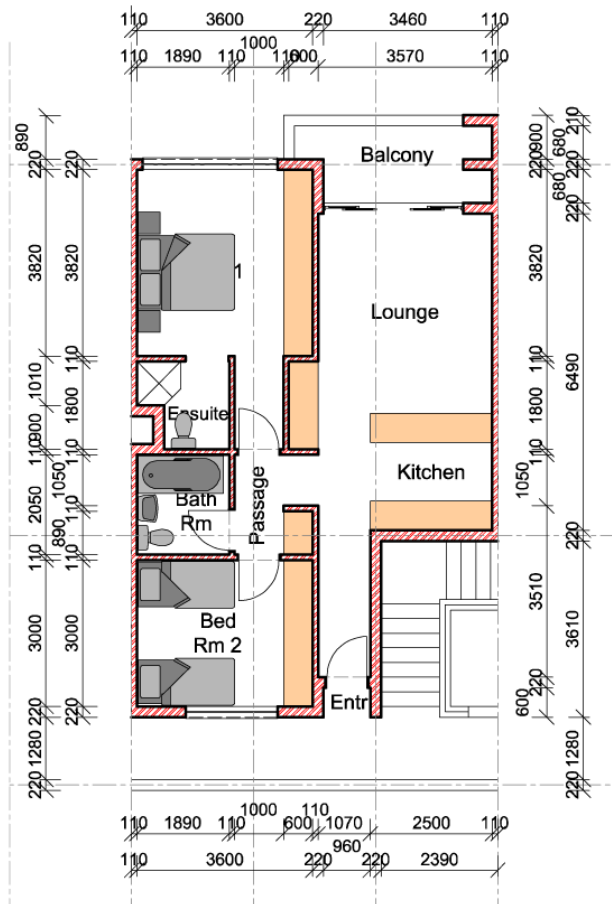
Positions of option 1 three bedroom units on each floor.

**Three bedroom Unit: option 2**

Lettable Area: 90.1 m<sup>2</sup>  
 Balcony: 9.4 m<sup>2</sup>  
 Passage: 0 m<sup>2</sup>  
 TOTAL AREA: 99.5 m<sup>2</sup>



**Positions of option 2 three bedroom units on each floor.**

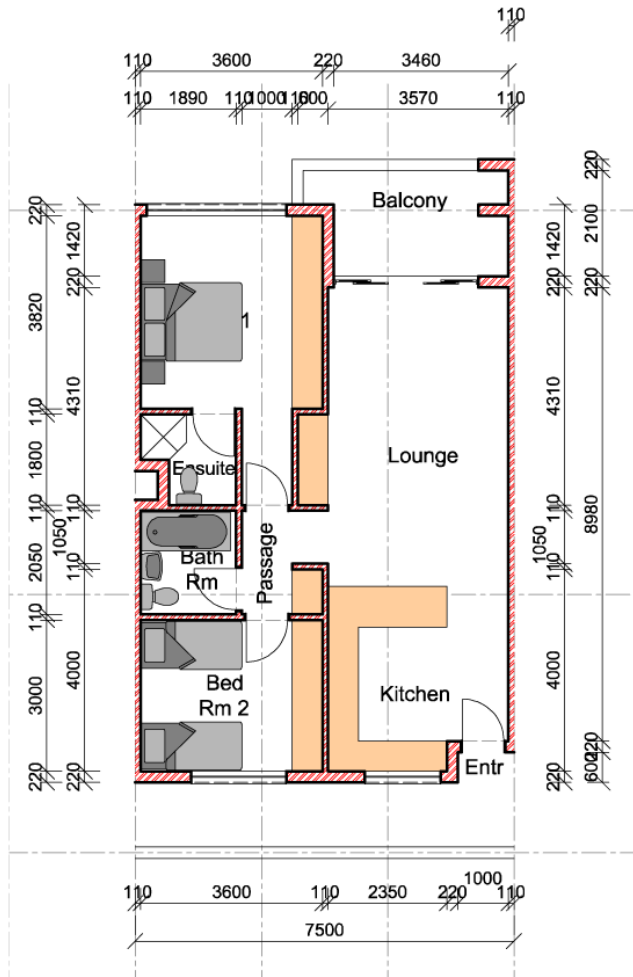


**Two bedroom Unit: option 1**

Lettable Area: 71.1 m<sup>2</sup>  
 Balcony: 7.7 m<sup>2</sup>  
 Passage: 0 m<sup>2</sup>  
 TOTAL AREA: 78.8 m<sup>2</sup>



**Positions of option 1 two bedroom unit on each floor.**



**Two bedroom Unit: option 2**

Lettable Area: 78.1 m<sup>2</sup>  
 Balcony: 9.7 m<sup>2</sup>  
 Passage: 0 m<sup>2</sup>  
 TOTAL AREA: 87.8 m<sup>2</sup>



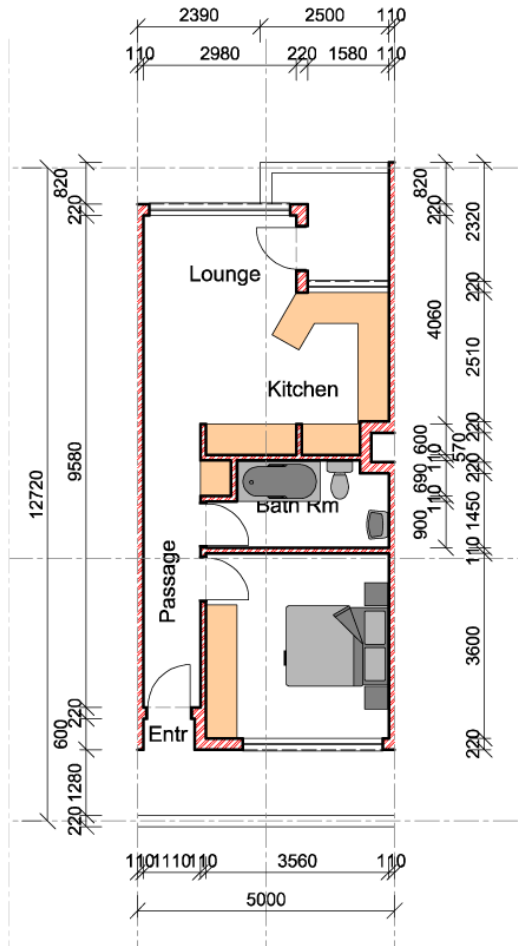
**Positions of option 2 two bedroom units on each floor.**

### Two bedroom Unit: option 3

Lettable Area: 90.6 m<sup>2</sup>  
 Balcony: 9.0 m<sup>2</sup>  
 Passage: 0 m<sup>2</sup>  
 TOTAL AREA: 99.6 m<sup>2</sup>



Positions of option 3 two bedroom units on each floor.



### One bedroom Unit

Lettable Area: 50.5 m<sup>2</sup>  
 Balcony: 4.3 m<sup>2</sup>  
 Passage: 0 m<sup>2</sup>  
 TOTAL AREA: 54.8 m<sup>2</sup>



Positions of the one bedroom units on each floor.